

Want to fulfill the recommendations of the James Review..?

We would be delighted to show you round The Greenpower Centre in West Sussex, home of the The Greenpower Education Trust and our test bed for development...

Features of The Greenpower Centre include:

- ▶ An extensive Green Roof
- ▶ A Sustainably sourced glu-laminated timber frame
- ▶ Highly insulated composite panels, sealed for airtightness.
- ▶ An Integral canopy which prevents the building from overheating during summer.
- ▶ An Under floor heating system supplied by an air sourced heat pump with exceptionally low energy demand.
- ▶ Grey water harvesting
- ▶ Natural ventilation
- ▶ An Intelligent lighting system



“Fit for Purpose”
“Improve quality and reduce costs”
“standardised drawings and specifications”
“latest thinking on educational requirements”



...Come and talk to

FORDINGBRIDGE

inspiring • sustainable • design • build

01243 554455
www.fordingbridge.co.uk

Fordingbridge plc . Arundel Road . Fontwell . Arundel . West Sussex . BN18 0SD

Fordingbridge welcomes The James Review...

As a long term supplier of buildings to the education sector, we were delighted to hear that an independent review was to be carried out by Sebastian James, who clearly has a reputation for seeking out quality with value.

The report emphasises the need to standardize without being over prescriptive, to gain economies of scale, to reject iconic buildings built for design reasons rather than practicality and above all, to ensure school buildings are fit for purpose yet value for money.

All these values have been embedded in Fordingbridge design philosophy for many years. We believe that cost efficient, sustainable buildings constructed to a tight time scale can be achieved, without having to sacrifice inspiring design and we have a portfolio to prove it! We have considerable experience working within the education sector and our background has taught us the advantages of pre-designed structures and off site construction.

We embrace the James report and are proud that our project portfolio reflects its recommendations. We would be very pleased to discuss any project with you and how we can help build a better future for young students.

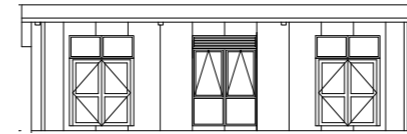
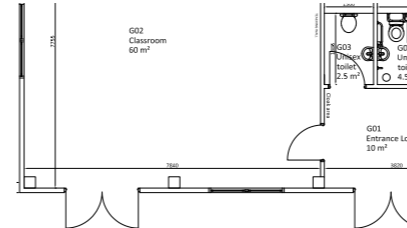
Edward Way

Edward Way
Chairman
Fordingbridge plc



‘The fact that we were able to procure such an attractive and versatile space, in such a short timescale, for such a good price, and to such a high standard means that I am absolutely certain that I have got the best possible deal for my students. The fact that they love the space so much is perhaps the greatest stamp of approval possible.’
Duncan Spalding, Head teacher, Aylsham High School

‘The standard of workmanship is of the highest and is no less than we have come to expect from Fordingbridge. I applaud your keeping to the work schedule. Now all I have to do is make sure that the other contractors are equally efficient!’
Mike Bettridge, Bursar, Bishop Perowne Church of England College.
For a wide range of our projects please visit:
www.fordingbridge.co.uk



Excellence in Design

At Fordingbridge we believe that the need for the fast deployment of extra space should not be a barrier to good design. We are able to provide a genuine alternative to ‘temporary’ buildings, with our skilled design team that are passionate about delivering inspiring spaces, at an affordable price and to a tight time scale.

Standardisation through specification

The James report highlights the need for “a clear set of standardised drawings and specifications, that will incorporate the latest thinking on educational requirements”.

- ▶ At Fordingbridge we can supply a variety of standard designs. Choose from a 1,2,3, or 4 classroom building or bring us your individual requirements for a more tailored approach.
- ▶ We have a standardised material specification, which not only allows us to keep costs down but also allows continual development of our construction techniques.
- ▶ We encourage post occupation feedback to help us

Simplicity of Construction

We understand that fast construction is essential, to respond to changes in pupil numbers and to minimise disruption to a school. At Fordingbridge we use a tried and tested construction method, with standardised components manufactured off site. The minimal use of wet trades means buildings can be occupied within weeks rather than months.

Practical, Energy Efficient and Cost Effective

Sebastian James calls for school buildings which “take into account the whole life costs...by considering materials specification and energy usage.”

Here at Fordingbridge we have always been passionate about reducing the environmental impact of our buildings through passive design, material choices and realistic low carbon technologies. We also understand that reducing our energy use means a cost effective long term solution.

- ▶ Typically a 150m² building costs just £1 a day to heat in the winter months.
- ▶ Buildings are made up of hard wearing highly insulated composite panels with an estimated life span of 35-40 years. Walls can also be clad in timber for a softer finish.
- ▶ We fit argon filled low emission triple glazing as standard.
- ▶ Underfloor heating is supplied by an air sourced heat pump with exceptionally low energy demand.

